

ANCHORAGE HOME BUILDERS ASSOCIATION PRESENTS

BUILDING

Alaska

SPRING 2022



April 2-3



April 9-10

In this issue

cover featuring



**spenard
builders
supply**

sponsored by



View Pointe **At The Ranch**

NEW 2022 HOMES



Ask about new addition
to View Pointe
coming soon



Panoramic view lots
with all utilities except
septic available now



Cook Inlet & mountain
views from select home
sites in View Pointe



Wasilla Creek & other
board-walk trails
in the adjacent refuge

Choose a view & lot that suits you.

**See www.theranchalaska.com/listings for current homes & builders
& respective Real Estate teams.**

www.theranchalaska.com/lotsforsale

Land development by Rex Turner dba Arctic Devco, Inc 907-841-6655

2GB
available

Anchorage to home, stop light free!

@View Pointe Alaska   



Award winning STEM Mchetanz Elementary close by



Bike path toward Mat Su Regional Hospital alongside this neighborhood



Exit Parks Hwy (3) at Trunk Rd, go south.
Right on E Gateway Drive.

This neighborhood is in the Mchetanz Elementary,
Colony Middle and Colony High School district.

www.theranchalaska.com/viewpointe

IN THIS ISSUE

HOMES BY AREA

South Anchorage..... 9-15

West Anchorage..... 21-26

East Anchorage..... 27

Eagle River..... 27-35

FEATURES

Note from the CEO 3

Spring Construction Showcase Map 6-7

Six Things to Consider When Planning Landscape Design In Alaska 17

The Anchorage Home Show is Back 22

Need a Job? The Homebuilding Industry Might Be The Right Fit 25

ON THE COVER



Our cover features Spenard Builders Supply and their expansive lumber yard. The experts at SBS are ready to help you get your next home project moving.

SPRING EVENTS



April 2-3
12 to 5 p.m.



Yard Sign Sponsor



Gold Sponsors



Cover Sponsor



Media Sponsor



FREE PARKING



April 9-10
10 a.m. to 6 p.m.



Presented by



Gold Sponsor



Silver Sponsors



Media Sponsor



NOTE FROM THE CEO



The Anchorage Home Builders Association is proud to present Building Alaska, our new biannual publication. This issue features our tour map and guidebook to the Spring Construction Showcase and information about the Anchorage Home Show.

Our members have opened their doors and are inviting you in to see the quality craftsmanship of their new construction homes and businesses to help you kick-start your summer projects or find the home of your dreams. Tour new construction homes and visit the businesses across Anchorage and Eagle River, from 12 to 5 p.m., April 2-3.

This year's event features 16 new construction homes and subdivisions including entries by Brick & Birch Homes, Colony Builders, Crown Pointe Homes, Hultquist Homes, Merit Homes, Michael Quinn Construction and Spinell Homes.

Tour the homes, keeping an eye out for innovative designs, materials and finishes. Be sure to enjoy the craftsmanship that is on display.

The Spring Construction Showcase opens Saturday, April 2 at 12 p.m. Please plan on taking a day or two to enjoy the tour of homes and businesses.

The following weekend, put your inspiration to work at the Anchorage Home Show, April 9-10, 10 a.m. to 6 p.m. at the Alaska Airlines Center. You can meet all of the pros in one location and get your summer projects going!

For more information about the Anchorage Home Builders Association, our mission and efforts to keep housing safe and attainable, please visit our website at www.ahba.net.

Nikki Giordano

Chief Executive Officer | Anchorage Home Builders Association



BOARD

PRESIDENT

Jason Dial | Rain Proof Roofing

VICE PRESIDENT

Andre Spinelli | Spinell Homes

TREASURER

Brandon Marcott | Triad Engineering

SECRETARY

Scott Allen | 360 Construction & Design

PAST PRESIDENT

Eric Visser | Visser Construction

DIRECTORS:

Brandon Burgett | Raven Mortgage

Christina Cope Hendrickson | Turnagain Tree Care

Karen Michelsohn | Michelsohn & Daughter Construction

Kyle Mirka | Allen & Petersen

Pete Nolan | NFIB

Ashley Plooy | Brick & Birch Homes

Bill Taylor | Colony Builders

Eric Trevithick | Trevi Builders

ADVISORS:

Jim Dunlap | Dunlap Builders

Clai Porter | NCP Design Build

Drew Cason | Professional Growth Systems

PROUD SUPPLIER OF



WINDOWS— NEW OR REPLACEMENT AT SBS

*Spenard Builders Supply offers a variety of new or replacement window options with professional installation. SBS is the go-to for customers who want **Quality** and **Expertise** without the added cost. Don't miss a view - protect your home from the elements - enhance your comfort - add value and save money with our affordable, performance-crafted Energy Star windows.*

*With our wide selection of major brands to choose from like **Alpine, Andersen, Jeldwen, Plygem, Milgard**, find the perfect windows to last a lifetime!*

*The **SBS Installation Crew** provides Safe and Professional Installation*. We handle the manufacturer warranty in-house to ensure customer satisfaction. When you buy windows from us, you get the added benefit of knowing you have the **SBS Advantage**. **Helping Build Alaska Since 1952.***



spenard builders supply 

To Learn More or
Schedule a Free
Consultation, visit
sbsalaska.com and
Just ASK SBS!

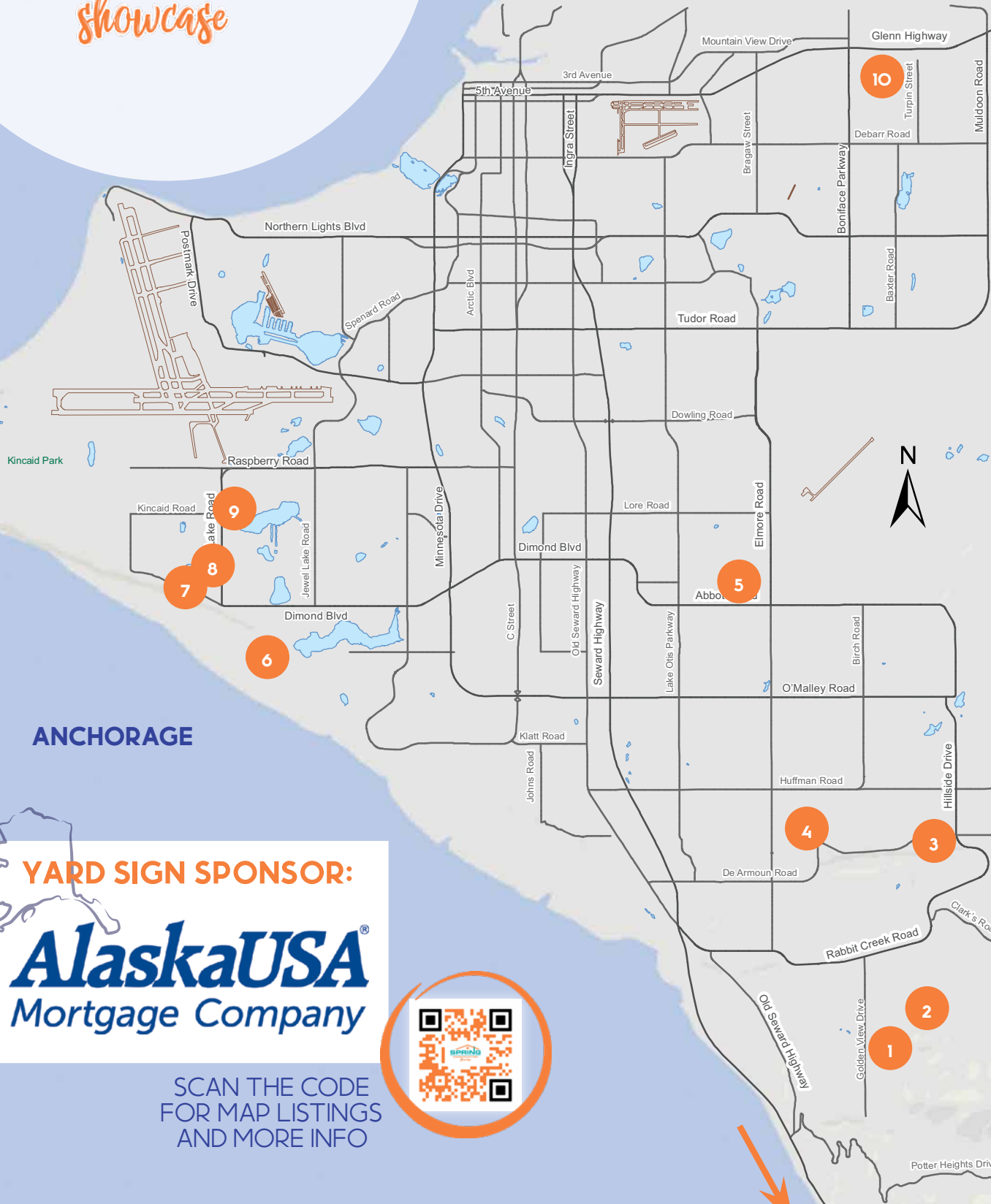
*Installation available in select markets

SPRING

CONSTRUCTION
showcase

JBER

TO EAGLE RIVER/CHUGIAK



ANCHORAGE

YARD SIGN SPONSOR:

AlaskaUSA[®]
Mortgage Company

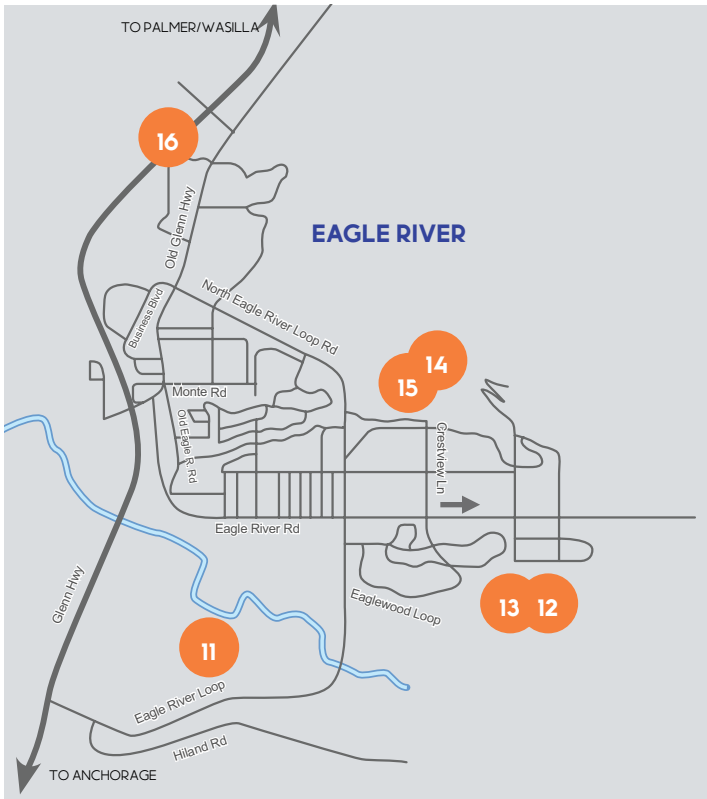


SCAN THE CODE
FOR MAP LISTINGS
AND MORE INFO

TO GIRWOOD

LIST OF HOMES

Anchorage and Eagle River



- 1 CROWN POINTE HOMES 9**
 6278 Prominence Pointe Drive
 \$1,300,000
- 2 CROWN POINTE HOMES 9**
 16290 Mountain Breeze Drive
 \$1,390,000
- 3 COLONY BUILDERS 11**
 Palaterra Subdivision at Depalatis Circle
 \$170,000 per lot
- 4 BRICK & BIRCH HOMES 13**
 13080 Bainbridge Road
 \$1,350,000
- 5 COLONY BUILDERS 15**
 9000 King David Drive
 \$725,000
- 6 CROWN POINTE HOMES 21**
 4500 Cheveley Circle
 \$2,200,000
- 7 SPINELL HOMES 21**
 6033 Jan Marie Drive
 \$769,900
- 8 MERIT HOMES 24**
 8697 Dry Creek Loop
 \$504,900
- 9 BRICK & BIRCH HOMES 26**
 5432 Sandhill Loop
 \$729,900
- 10 SPINELL HOMES 27**
 221 Shageluk Street
 \$422,000
- 11 HULTQUIST HOMES 27**
 8824 Turlock Drive
 \$749,000
- 12 SPINELL HOMES 28**
 20218 Eagles Nest Court
 \$422,000
- 13 SPINELL HOMES 30**
 9544 Grey Owl Way
 \$590,000
- 14 MICHAEL QUINN CONSTRUCTION 31**
 11174 Kinship Circle
 \$1,000,000+
- 15 MICHAEL QUINN CONSTRUCTION 33**
 18685 Genteel Circle
 \$1,000,000+
- 16 SPINELL HOMES 35**
 13120 Chase Circle
 \$517,000



Helping build the lives of hard-working people has been our mission since the day we were founded. Beyond ensuring members can confidently make financial decisions, this means creating a community that helps people pursue their dreams and provide for their families.

Nuvison honors and contributes throughout the year to veterans, active military, first responders, local heroes & businesses, youth programs and more.

Visit our blog for more on Nuvison's outreaches:
nuvisionfederal.com/blog/community

From checking accounts to loan products, Nuvison Credit Union is here in your community to provide you with all your financial needs to help you with the life you build.

Visit nuvisionfederal.com to find out more.

nuvisionfederal.com



We've Got You Covered For Life in Alaska's Severe Weather



Roofs, re-roofs and repairs, Rain Proof Roofing has been serving Alaskans since 1962.

We stand by our people, products and performance. Expect a safe crew, quality job and competitive bid. With offices in Anchorage & Wasilla, we're up for any residential or commercial project.



(907) 344-5545

www.rainproofroofing.com

\$1,300,000

CROWN POINTE HOMES

1



PROMINENCE POINTE

6278 PROMINENCE POINTE DRIVE

3,700 sq. ft.

4 bath

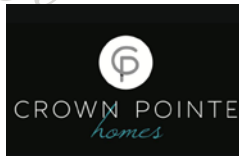
4 bedroom

3 garage

Beautiful custom-built hillside ranch with gorgeous views of Cook Inlet and the Alaska Range. Great room plan with dramatic fireplace and the exceptional finishes Crown Pointe is known for. Walkout lower level features a secondary kitchen for mother-in-law.

DIRECTIONS: New Seward Hwy to Rabbit Creek Rd Exit, East on Rabbit Creek Rd. Right on Goldenview Dr. Left on Prominence Pointe Dr.

Builder



FACEBOOK.COM/CROWNPOINTEHOMESALASKA

Agent



RE/MAX
DYNAMIC PROPERTIES

BETHANY WEISER
(907) 223-1632

bethanyweiser@remax.net

\$1,390,000

CROWN POINTE HOMES

2



Under Construction

SHANGRI-LA

16290 MOUNTAIN BREEZE DRIVE

4,250 sq. ft.

4.5 bath

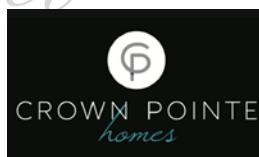
4 bedroom

3 garage

Beautifully designed ranch style with a walk-out lower level. Features exceptional finishes for which Crown Pointe is known. Owner suite accesses the west-facing deck with outstanding views of the city, inlet and mountains. Each bedroom enjoys an ensuite bath and a walk-in closet.

DIRECTIONS: New Seward Hwy to Rabbit Creek Rd Exit, East on Rabbit Creek Rd, right on Goldenview Dr, left on E 162nd Ave, right on Sandpiper Dr, slight left onto Mountain Air Dr, right on Mountain Breeze Dr

Builder



FACEBOOK.COM/CROWNPOINTEHOMESALASKA

Agent



RE/MAX
DYNAMIC PROPERTIES

BETHANY WEISER
(907) 223-1632

bethanyweiser@remax.net

The Anchorage Home Show is Back!



APRIL 9 - 10
2022

10 a.m. - 6 p.m.

AT THE

Alaska
AIRLINES
— CENTER —

3550 PROVIDENCE DR.

Free Parking

PLAN YOUR VISIT
CLICK HERE FOR A FULL LIST OF
EXHIBITORS AND WORKSHOPS

100 Free Toolkits
FOR FIRST 100 WOMEN PER DAY



FOR MORE INFORMATION VISIT WWW.AHBA.NET.

Presented by



Gold Sponsor



Silver Sponsors

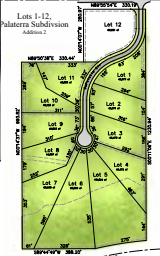
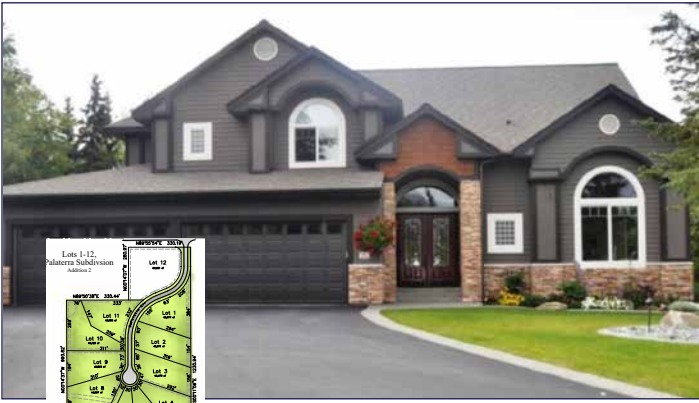


Media Sponsor iHeartMEDIA ANCHORAGE

\$170,000 PER LOT

COLONY BUILDERS

3



Subdivision Entry

PALATERRA SUBDIVISION AT

DEPALATIS CIRCLE

44,000 - 101,000 sq. ft. lots

7 Available lots

Build your dream home in the Palaterra subdivision, a gorgeous hillside cul-de-sac community. Enjoy a beautifully wooded acre-plus lot with great soils. The 11-lot subdivision has room for all your toys plus paved roads for easy access. Customize any of award-winning Colony Builders' floor plans at colonybuildersak.com for this unique opportunity to build on gently sloping large lots in the Goldenview and South school district.

DIRECTIONS: New Seward Hwy to DeArmoun Rd Exit, East on DeArmoun Rd, right on DePalatis Cir

Builder



WWW.COLONYBUILDERSAK.COM

Agent



RE/MAX

TAMI TAYLOR
(907) 244-3504
tamitaylor124@gmail.com



**You customize their home.
We'll customize their home financing.**



RESIDENTIAL
MORTGAGE, LLC
NMLS #167729

(907) 376-0353
www.residentialmtg.com



\$1,350,000

BRICK & BIRCH HOMES

4



Under Construction

13080 BAINBRIDGE ROAD

4,700 sq. ft.

4 bath

5 bedroom

3 garage

This must-see home boasts almost 5,000 sq ft of living space. Enjoy panoramic views of Turnagain Arm with a gourmet kitchen overlooking the open living area with 20-ft vaulted ceilings and floor-to-ceiling windows. The home's luxuries include an oversized master suite with a must-see master bath, butler's pantry, mudroom, movie theater, mother-in-law kitchen, and more. This build takes in hillside living with a massive 700 sq ft deck.

DIRECTIONS: From Seward Highway to Huffman Rd Exit, take roundabouts and head East on Huffman Rd, right on Bainbridge Rd

Builder



WWW.BRICKANDBIRCHAK.COM

Agent



KW ALASKA GROUP
KELLERWILLIAMS. REALTY

LAUREN LICK
(907) 782-8676
lauren@rmgrealstate.com



SERVING the GREAT LAND

Your Escrow Team



Sue Wolfe
Wasilla Branch Manager



Stephanie Kiefer
Anchorage Escrow Manager



Amber Brophy
Business Development



Sharon Patrick
Business Development



Cristy Nugent
Sr. Escrow Officer



Karen Goentzel
Sr. Escrow Officer



Rachel Brassard
Commercial Escrow Officer



Darcy Ellingboe
Escrow Officer



Cassie Benedict-Monnens
Escrow Officer



Yvette Lund
Escrow Officer



Katie Jolliffe
Escrow Officer



Amber Goley
Escrow Officer

Call us or visit our website today to open your next order | alyeskatitle.com

Anchorage

3801 Centerpoint Drive, Ste. 102
Anchorage, Alaska 99503
Ph: 907.569.2842 | Fx: 907.569.2843

Eagle River

11823 Old Glenn Highway, Ste. 118
Eagle River, Alaska 99577
Ph: 907.622.2842 | Fx: 907.622.2843

Wasilla

865 N Seward Meridian Pkwy., Ste. 101
Wasilla, Alaska 99654
Ph: 907.352.4000 | Fx: 907.352.4001

For a personalized home loan experience, choose Alaska USA Mortgage Company.

People you know. A name you trust.®



Jason Baer
NMLS #204105



Courtney Ford
NMLS #406350



Paul Hansmeyer
NMLS #348629



Timothy Kane
NMLS #740400



Stephanie Kerr
NMLS #1035502



Steven Kihn
NMLS #222464



Lisa Makoni
NMLS #203684



Catherine Margolin
NMLS #203933



Kathy Petty ★AVP
NMLS #203077



Yohyon Pharr
NMLS #204702



Alex Rasmussen
NMLS #1540151



David Schuld
NMLS #204080



Madona Rhine-Stack
NMLS #204026



Agnes "Kay" Shearer
NMLS #880533



Jeff Stanford
NMLS #205117



Russ Wallace
NMLS #378666



Linda Winters ★AVP
NMLS #205946



Adam Fredrichs
NMLS #1982314



Michael Frieser
NMLS #413914



Anthony Levine
NMLS #1839701



Preston Williams ★AVP
NMLS #442359



Chris Thomas
NMLS #1970848



Jarred Lewis
NMLS #295789



Lance J Sweet
NMLS #191020

Give us a call at 907-563-3033 to get started!

alaskausamortgage.com | Find us on   



License #AK157293

AlaskaUSA
Mortgage Company

\$725,000

COLONY BUILDERS

5



WINCHESTER GLEN

9000 KING DAVID DRIVE

2,383 sq. ft.

2.75 bath

4 bedroom

2 garage

Colony's stylish farmhouse has 4 beds, 2.5 baths and a vaulted living room. The kitchen, with quartz countertops and an island, is open to the living and dining room. The gorgeous master bedroom has a premium soaking tub and easy access to the upstairs laundry room. Fine quality finishes are found throughout. This home is centrally located, only minutes to shopping and other conveniences.

DIRECTIONS: New Seward Hwy to Abbott Rd, East on Abbott Rd, left on King David Dr



WWW.COLONYBUILDERSAK.COM

Agent



RE/MAX

TAMI TAYLOR
(907) 244-3504
tamitaylor124@gmail.com



CONSTRUCTION ADVANTAGE LOCK

An extended rate lock for building a new home

When you're building a new home, you spend a lot of time considering finishes and fixtures. What you shouldn't have to spend time worrying about is rising interest rates. With Alaska USA Mortgage Company Construction Advantage Lock, we take the hassle out of building your new home by locking your permanent loan interest rate during home construction to protect you from rising rates.

Give us a call at 907-563-3033 to get started! >>



License #AK157293

alaskausamortgage.com

AlaskaUSA
Mortgage Company



TITAN

Sitework & Landscape Contractor

Anchorage's one-stop shop for outdoor home improvements.

Lawns | Decks | Fencing | Topsoil
 Concrete | Driveways | Pavers | Fire Pits
 Retaining Walls | Water Features
 Commercial Snow Removal



Call today for a free estimate (907) 334-8044.

www.TitanAlaska.net



Custom Homes & Remodels

Your project...from all angles.

To see more of our work, visit our website or check us out on Houzz & Facebook.



www.360-ak.com

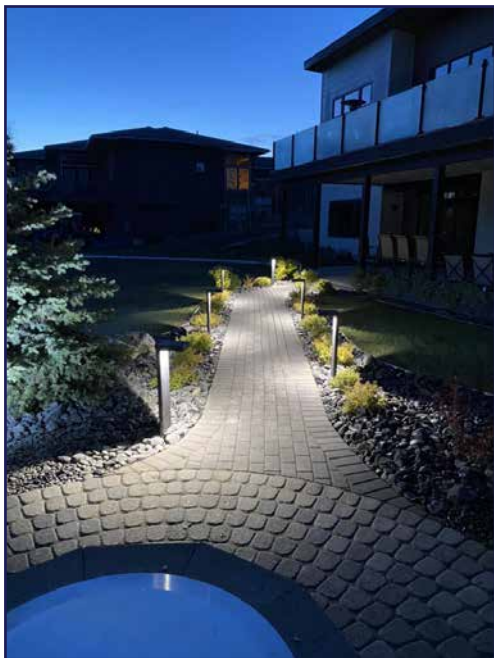


SIX THINGS TO CONSIDER WHEN PLANNING LANDSCAPE DESIGN IN ALASKA



BY:
TODD
CHRISTIANSON,
Titan Sitework
Contracting

Alaska's climate has some pretty harsh conditions. Whether you're interested in completely redesigning your landscape or making some minor changes, there are some important factors to consider before you plant. Don't head to the local garden supply store because they may carry plants that won't survive here. Planning ahead will ensure that you buy plants that best suit your needs and will thrive. These tips will put you on the road to creating a beautiful, cohesive and thriving landscape.



ASSESS YOUR YARD'S CONDITIONS

It's important to use the USDA Plant Hardiness Zone Map to understand what can survive in Alaska. You then need to look at your own yard and its conditions. Sun, shade, wind and topography are other factors that need to be addressed before you plant.

BUY FUNCTIONAL PLANTS

How do you want your plants to function in your yard? Are they purely aesthetic or do you want them to provide you with fresh fruits and vegetables, a lovely aroma or more. Plants can also create barriers. They can identify where your landscape ends or define certain areas. They can also block views and access.



CREATE A THOUGHTFUL LAYOUT

When planning your landscaping, you need to account for the growth of the plants. Consider how closely spaced or far apart they need to be, based on the eventual size. You can talk to professionals about how they should be layered and staggered. For example, for hedges we recommend 16 inches in width for a normal 2-gallon shrub between 2.5 and 3 feet to allow for growth.

IT'S IN THE DETAILS

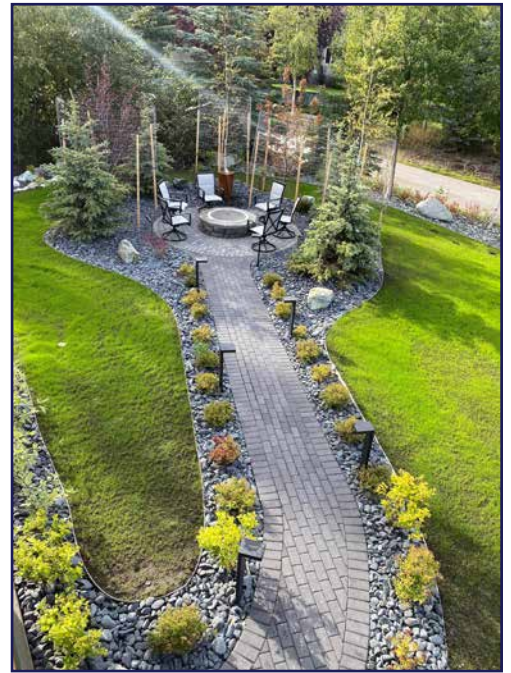
Use plants, hardscapes and garden ornaments to create an array of themes, textures and colors. Plan how these can complement and contrast each other to create a cohesive and captivating look.

PLAN FOR THE FUTURE

Be sure to consider the plant's growth rate, maintenance needs and mature size. The mature size is typically based on optimal growing conditions, so your landscape's specific conditions may cause a plant to grow larger or smaller.

BE EFFICIENT IN YOUR CHOICES

You don't want your new landscape to be a drain on resources. Planting resource-efficient plants will help you manage water. Also look for ones that will require fewer fertilizers and pesticides. Before removing any of your current plants, determine if they need to be removed completely or could they be replanted elsewhere.



There's a lot to think about when planning a new landscape. It's always a good idea to consult a professional. If you plan to hire a contractor, come to the table with a budget for the work and for future maintenance. The experts at Titan Sitework Contracting are here to help you turn your dreams into reality, find out more at www.titanalaska.net @TitanLLC.Dreamscapes on Facebook and @titanllcsitework on Instagram.



RUBY ESTATES

DISCOVER OUR NEWEST NEIGHBORHOODS

Uncover Ruby Estates the hidden gem overlooking Campbell Lake in Anchorage. Heather Wood Estates is just down the road and even closer to the trails of Kincaid with the same amazing mountain views. Looking to get away from the city? Owls Nest in Eagle River offers gorgeous views of the Eagle River Valley.

Heather Wood Estates
Starting at \$580,000

Ruby Estates
Starting at \$600,000

Campbell Lake
Campbell Creek Estuary Park

Jewel Lake Road

North Pointe

Campbell Lake Public Access (North Easement)

Campbell Lake

Lot 13 2,744 sq ft	Lot 12 3,321 sq ft	Lot 11 6,058 sq ft	Lot 10 6,192 sq ft	Lot 9 6,551 sq ft	Lot 8 6,181 sq ft	Lot 7 6,500 sq ft	Lot 6 6,203 sq ft	Lot 5 5,960 sq ft
Lot 14 8,420 sq ft	No Home Circle						Lot 4 7,072 sq ft	Lot 3 6,820 sq ft
Lot 15 10,026 sq ft	Lot 16 11,342 sq ft	Lot 17 8,774 sq ft	Lot 18 5,846 sq ft	Lot 19 8,044 sq ft	Lot 20 8,846 sq ft	Lot 21 7,538 sq ft	Lot 2 6,056 sq ft	Lot 1 6,204 sq ft

HEATHER WOOD ESTATES



OWLS NEST



Built by Our Family for Yours

Giving families the keys to their new home since 1987. We look forward to building your family the perfect place for life's moments.

Anchorage



Kevin Sigafoos
(907) 244-3212
Keller Williams Alaska Group

Call a new
construction
specialist

Eagle River



Questa Locke
(907) 350-2322
Keller Williams Alaska Group

Owls Nest
Starting at \$520,000

1900 W. Northern Lights Blvd. Suite 200, Anchorage, AK 99517
Phone: (907) 344-5678 | spinellhomes.com

Spinell Homes, Inc., AK Contractor #220310, Res. #92 & 1572



beko
Live like a Pro

introducing
efficiency
and beauty in
home appliances.

premium
technology
within reach
for healthier living

**BUILDER PACKAGES
AVAILABLE**

anchorage:
907.276.0111
3002 seaward hwy.



allen & petersen
cooking & appliance center

anchorage • wasilla

www.aphome.com

wasilla:
907.206.4100
990 s. hermon rd.

\$2,200,000

CROWN POINTE HOMES

6



Under Construction

RESOLUTION BLUFFS

4500 CHEVELEY CIRCLE

5,500 sq. ft.

5 bath

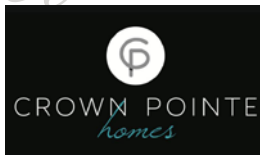
4 bedroom

3garage

Stunning Craftsman by Crown Pointe Homes located in Resolution Bluffs. Unobstructed views from every window, radiant heat and air conditioning. The home features 4 bedrooms plus a parlor room and office/theatre. Gym/flex room in the oversized garage. Elevator, large pantry and more.

DIRECTIONS: Minnesota Dr to 100th Ave Exit, West on 100th Ave, continue onto Chiniak Bay Dr, right on Cheveley Cir

Builder



FACEBOOK.COM/CROWNPOINTEHOMESALASKA

Agent



kw ALASKA GROUP
KELLERWILLIAMS. REALTY

SHANNON INGRAM
(907) 748-7861

shanningramak@gmail.com

\$769,900

SPINELL HOMES

7



Under Construction

HEATHER WOOD ESTATES

6033 JAN MARIE DRIVE

2,341 sq. ft.

3 bath

4 bedroom

3 garage

The St. Elias is 2,341 square feet of luxury. The modern craftsman-style home has a main floor bedroom and office. The great room is stunning with high ceilings, fireplace and built-in shelving unit. The kitchen features a separate dining room, kitchen island, pantry, stainless steel appliances, hardwood flooring and quartz countertops. The primary suite has a soaking tub, stall shower, double vanity and walk-in closet.

DIRECTIONS: From Dimond Blvd, North on Beck's View Cir, right on Jan Marie Dr

Builder



WWW.SPINELLHOMES.COM

Agent



kw ALASKA GROUP
KELLERWILLIAMS. REALTY

KEVIN SIGAFOOS
(907) 244-3212

Kevin@tophomesalaska.com

The Home Show



THE ANCHORAGE HOME SHOW IS BACK TO IN-PERSON AFTER A TWO-YEAR HIATUS.

This is Alaska's biggest home show event of the year. The two-day event is scheduled for April 9 - 10, 2022 at the Alaska Airlines Center. Doors will be open daily from 10 a.m. to 6 p.m.

Coming on the heels of our popular Spring Construction Showcase, the Home Show gives people the opportunity to take their inspiration and make it a reality by chatting with local businesses about

all things homebuilding and remodeling. More than 150 local exhibitors will be in attendance, ranging from homebuilders to design firms and real estate agents to home décor companies.

The Anchorage Home Show is a one-stop shop for home inspiration. Not only will you be inspired by the product and design teams, but local businesses are also on-hand to answer questions and turn your vision into a reality. Whether it's building, remodeling or landscaping, whatever your next project, someone is willing and able to help.

The Anchorage Home Show is an exciting opportunity for local businesses to connect with customers. Many of these businesses have struggled to make it

through the challenges presented by the pandemic. While increasing demand and low-interest rates prompted growth in the homebuilding industry, companies have also faced several difficult obstacles. These businesses have battled supply chain issues and labor shortages. But despite the rocky road, they're committed to helping Alaskans with their homes.

The past two years made people think differently about their homes. For some, they wanted to get out of the city and get a little more space. Others wanted more space inside their homes for offices and gyms. And in some cases, extra time at home revealed the flaws they've been putting off for years and prompted projects.



Home is Back!

APRIL 9 & 10, 10 A.M. TO 6 P.M.



AT THE

Alaska
AIRLINES
— CENTER —

3550 PROVIDENCE DR.,
Free Parking

There's something for everyone at the Home Show. The family-friendly event features activities for the kids. The first 100 women through the door each day will receive a free pink toolkit. You can also attend a demo or workshop on one of many educational and informative topics like staying on budget or design. One of the many benefits of being back in person this year is that vendors will have the product on hand to check out.

Wherever you're at with your home, the Anchorage Home Show is here to help make it one you love. Local businesses are ready and excited to help you get inspired and make your vision come to fruition. When homeowners love where they live, they're better neighbors.

Supporting local business strengthens Alaska. The Home Show is an exciting opportunity to connect as a community. We look forward to seeing you there!

**FOR MORE INFORMATION
VISIT WWW.AHBA.NET.**

**THE 2022 ANCHORAGE HOME
SHOW IS PRESENTED BY**



Gold Sponsor



Silver Sponsors



Media Sponsor



**BUILD A
BIRDHOUSE**
BRING THE KIDS OUT TO BUILD
BIRDHOUSES WITH HOME DEPOT
12 - 2 P.M. ON SUNDAY

**EAT, DRINK &
BE MERRY**
FOOD TRUCKS WILL BE IN THE
PARKING LOT ALL WEEKEND
SERVING UP GREAT TREATS!
INSIDE ENJOY BEER
AND WINE IN THE SHOW!

**GET TO WORK IN
OUR WORKSHOPS**
CHECK OUT OUR WORKSHOP
SCHEDULE TO SEE HOW
YOU CAN GET HANDS ON
WITH THE PRO'S!
SEE THE FULL SCHEDULE AT
AHBA.NET.



Under Construction

SONOMA GLEN

8697 DRY CREEK LOOP

1,936 sq. ft.

2.5 bath

3 bedroom

2 garage

The popular Stags Leap plan has a spacious great room with a 9-foot ceiling and upgraded linear fireplace. Open kitchen with large island and gas range with hood. Luxury vinyl plank flooring, stainless steel appliances, upgraded cabinets and quartz countertops. Mudroom off the garage with bedrooms and laundry upstairs. Luxury master suite with private bath and walk-in closet.

DIRECTIONS: West on Raspberry Rd, left on Sand Lake Rd, right on Kincaid Rd, left on West Park Dr, left on Dry Creek Lp

Builder



WWW.MERITHOMESAK.COM

Agent



kw ALASKA GROUP
KELLERWILLIAMS, REALTY

GORDON SLOANE
(907) 244-3381

Gordon@adhomegroup.com

ADVANCED CARPENTRY LEVEL 1



THIS PROGRAM COMBINES CLASSROOM AND PRACTICAL HANDS-ON EXPERIENCES DEVELOPED BY THE NATIONAL CENTER FOR CONSTRUCTION EDUCATION AND RESEARCH (NCCER). STUDENTS WILL RECEIVE TRAINING FOR CARPENTRY LEVEL ONE WITH KEY ELEMENTS OF CARPENTRY LEVEL TWO TO HELP FAMILIARIZE THEM WITH REAL-WORLD SITUATIONS.

GUARANTEED
Employment
Opportunities

ELIGIBILITY REQUIREMENTS

- 18 YEARS OF AGE OR OLDER
- PARTICIPATION PHYSICAL
- 5 -PANEL DRUG TEST

PROGRAM DETAILS

- 8 WEEK PROGRAM
- 10 HOUR DAYS
- MONDAY - THURSDAY
- STUDENTS WILL BE EQUIPPED WITH THEIR OWN TOOLBOX, INCLUDING HAND-TOOLS AND PPE THAT THEY WILL KEEP UPON COURSE COMPLETION

Contact for questions ADMISSIONS@NITALASKA.COM 907-357-6400

NEED A JOB?

THE
HOMEBUILDING
INDUSTRY
MIGHT
BE THE
RIGHT FIT.



BY:
NIKKI GIORDANO

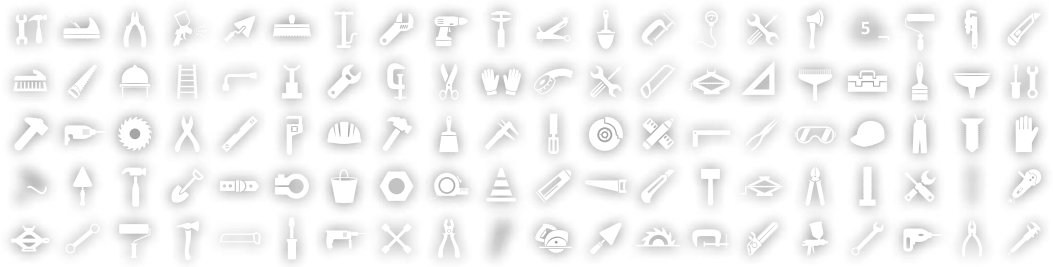


IF YOU ARE IN NEED OF A JOB, looking for a career change, searching for a high-paying position or just need a fulfilling career where you get to create with your hands, the construction industry needs you. Workforce shortages are creating an incredible opportunity for people looking for change. There are endless opportunities right now in a number of different areas of the homebuilding industry. If you're open to change, there's an opportunity waiting for you.

THE CONSTRUCTION INDUSTRY is open to everyone of all skill and education levels. The traditional college degree is often unnecessary. Instead the industry favors a strong work ethic and hands-on training. There are many trades like electrical, plumbing and welding that typically have apprenticeship programs that allow you to train under skilled craftsmen while also earning a living. This is different than the path to a traditional four-year college degree, where students pay a high price tag for their education while also working side jobs to support themselves during the process.

In addition to the useful skills provided through these careers, they're high-paying jobs. According to the Alaska Department of Labor and Workforce Development, welders make an average \$35 per hour, electricians make an average of \$36 per hour and plumbers earn \$42 per hour. In more general terms, the average salary for a construction worker in Alaska is \$50,000.

SKILLED TRADE JOBS also provide job security. Even as many aspects of the world change, the homebuilding industry is not going away. The pandemic proved that people value the safety and convenience of their homes.



They want the space to be able to work, raise families and partake in hobbies.

As people are demanding more out of their homes, that demand is being put on homebuilders. If there's any hope of meeting the demand for residential homes, the industry will need to recruit and train a workforce. The Home Builders Institute's most recent Construction Labor Market Report shows the industry needs to train and hire 2.2 million new workers within the next three years in order to meet the nation's housing demand.

PROSPECTIVE EMPLOYEES are looking for more than just a paycheck. Ed Brady, CEO of HBI, says the construction industry needs to be a place where people want to work. He encourages the industry to remain competitive salary-wise, but it also needs offer other benefits like the ability to have a good work-life balance.

ALASKA'S HOMEBUILDING INDUSTRY is facing a bright future, but it needs your help. Alaskans are desperate for new homes, and the construction industry is anxious to deliver them. However, the lack of a trained workforce will slow the process. There are numerous opportunities within the homebuilding industry to launch lifelong, stable careers. A healthy construction industry brings economic prosperity to the area. Working together, Alaskans can create a thriving community for their neighbors.

MORE RESOURCES

AHBA, www.ahba.net

ASD's Career Technical
Education Department,

www.asdk12.org/domain/1196

Northern Industrial Training,
www.nitalaska.com



Under Construction

Builder



WWW.BRICKANDBIRCHAK.COM

SANDHILL RESERVE

5432 SANDHILL LOOP

2,329 sq. ft.

4 bedroom

2.5 bath

3 garage

The Cedar Creek is a contemporary two-story home built by Brick & Birch Homes. Enjoy open concept living, featuring a spacious pantry and gourmet kitchen overseeing the living and dining area. Upstairs you will find a spectacular master ensuite with a luxury-sized shower, 3 guest bedrooms, guest bath, laundry room and a private office. Don't miss the spacious three-car garage and mudroom to meet your Alaska outdoor needs.

DIRECTIONS: From Dimond Blvd, North on Sand Lake Rd, right on W 80th Ave, left on Sandhill Lp

Agent



CONNIE YOSHIMURA
(907) 646-3670
cyoshimura@gci.net

QUALITY AND SERVICE ARE THE RULE,
not the exception

Highest Quality Products at Competitive Prices
Extensive Inventory | Experienced Staff

BUILDERS MILLWORK
Supply

Windows ♦ Doors ♦ Cabinets ♦ Trim
1701 E. Dimond Circle • Anchorage, Alaska 99507
Telephone: 1-907-561-1355



BUILDERSMILLWORKSUPPLY.COM

\$422,000

SPINELL HOMES

10



Under Construction

Builder



WWW.SPINELLHOMES.COM

LAUREN GLENN

221 SHAGELUK STREET

1,704 sq. ft. 2.5 bath
4 bedroom 2 garage

The two-story Cottonwood plan features 16-foot ceilings in the great room. The upstairs hosts all the bedrooms plus a laundry room. The primary suite has a private bath and walk-in closet. The kitchen has an island, stainless steel appliances and hardwood flooring. Enjoy easy access to the garage. The home also has an on-demand water heater and is 5 star energy rated.

DIRECTIONS: Glenn Hwy to Turpin Exit, right on Whisperwood Park Dr, left on Shageluk Dr

Agent



KW ALASKA GROUP
KELLERWILLIAMS. REALTY

KEVIN SIGAFOS
(907) 244-3212
Kevin@tophomesalaska.com

\$749,000

HULTQUIST HOMES

11



Under Construction

Builder



WWW.HULTQUISTHOMES.COM

EAGLE BLUFF ESTATES

8824 TURLOCK DRIVE

2,594 sq. ft. 3 bath
3 bedroom 3 garage

This amazing home has a reverse living floor plan that allows for beautiful mountain views from the main living area. It features 3 bedrooms with an option for 4. There are 2 bedrooms and a family room located downstairs. Beautiful open kitchen plan. Builder will provide \$5,000 toward closing costs or options and upgrades with the use of preferred lender Raven Mortgage.

DIRECTIONS: Glenn Hwy to Hiland Rd Exit, right on Eagle River Loop Rd, left on Wolf Den Dr (formerly Yosemite Dr), right on Yellowstone Dr

Agent



TATE ROGERS
(907) 302-6262
tate@firebird.realty



Under Construction

EAGLES NEST

20218 EAGLES NEST COURT

1,798 sq. ft.

2.5 bath

3 bedroom

2 garage

Come explore Eagle's Nest, a small community on a dead-end street with easy access and mountain views. Enjoy 1,800 square feet of open concept living. Large windows and tall ceilings let the light in. The home features gorgeous finishes like solid surface countertops and laminate flooring. Huge garages have plenty of room for storage, organization and all the toys that make life in Alaska an adventure. The community is just minutes from JBER.

DIRECTIONS: Glenn Hwy to Highland Rd Exit, right on Eagle River Loop Rd, right on Eagle River Rd, right on Eagle River Ln, left on Eagles Nest Crt

Builder



WWW.SPINELLHOMES.COM



KW ALASKA GROUP
KELLERWILLIAMS. REALTY

QUESTA LOCKE
(907) 350--2322

questa@alaskahomequest.com

SPECTACULAR VIEWS AND PRIVACY AT OWLS NEST
Introducing an all new Eagle River neighborhood by Spinell Homes



Owls Nest Homes Starting at \$515,000



Questa Locke
907.350.2322
www.alaskahomequest.com

ANCHORAGE HOME BUILDERS ASSOCIATION

GIVE BACK RAFFLE

\$20
PER TICKET

\$7,500 - 1 WINNER
\$2,500 - 2 WINNERS
\$500 - 3 WINNERS
\$250 - 4 WINNERS

WIN UP TO
\$7,500
CASH

Drawing
will be held
JULY 21, 2022
at the
AHBA offices.

Do not have to be
present to win.

**PURCHASE TICKETS AT THE HOME SHOW
OR ONLINE AT WWW.AHBA.NET**



\$800,000+ in distributions and
100's of hours in volunteer time in
20 years!



Brightening the Holidays for more
than 1,000 kids annually and raising
\$70,000+ per year since 2002.



\$25,000 to Salvation Army's
McKinnell House and more
to support Alaskans facing
homelessness.



**LEARN HOW YOU CAN SUPPORT THE CARE ENDOWMENT BY
CONTACTING ENDOWMENT@AHBA.NET OR 907-522-3605**



Under Construction

OWLS NEST

9544 GREY OWL WAY

1,949 sq. ft.

2.5 bath

4 bedroom

2 garage

Owls Nest is Spinell Homes' newest Eagle River community! This quiet community features large lots with room for spacious homes and big garages. Floor plans maximize views while providing open concept living. Large windows in the two-story living room create a sense of openness. With laminate flooring and solid surface countertops, the finishes throughout reflect superior quality.

DIRECTIONS: Glenn Hwy to Highland Rd Exit, right on Eagle River Loop Rd, right on Eagle River Rd, right on Eagle River Ln, left on Grey Owl Ln

Builder



WWW.SPINELLHOMES.COM

Agent



kw ALASKA GROUP
KELLERWILLIAMS. REALTY

QUESTA LOCKE
(907) 350--2322
questa@alaskahomequest.com

**Providing Alaskans with the
HIGHEST QUALITY CRAFTSMANSHIP AND CUSTOMER SERVICES
for nearly 40 years.**



Furnace Replacement



Boiler Replacement



Water Heater Replacement



Snowmelt Systems



Radiant Heating



8301 Schoon St | Anchorage
partuschplumbing.com
907.344.5066

f /partuschplumbingheating

\$1,000,000+

MICHAEL QUINN CONSTRUCTION

14



Under Construction

BRAENDEL CREEK

11174 KINSHIP CIRCLE

4,321 sq. ft.

4 bedroom

4.5 bath

4 garage

Check out this raised ranch with a basement floor plan that captures the most out of its views. Mountains out the front and a creek out the back. This home features over 4,300 square feet of living space, with another 1,000-plus square feet of unfinished space providing the family endless opportunities. The 1,500-plus square foot garage is perfect for storing all the toys!

DIRECTIONS: Glenn Hwy to Highland Rd Exit, right on Eagle River Loop Rd, right on Talarik Dr, left Kinship Ln

Builder

Agent



WWW.MICHAELQUINNCONSTRUCTION.COM

SKYLER QUINN
(907) 229-8117
skylerequinn@gmail.com

FC FLORCRAFT CARPET ONE FLOOR & HOME

A Product for Every Kind of Life You Lead.

AREA RUGS CARPET CABINETS VINYL CERAMIC LAMINATE BLINDS HARDWOOD

907.452.1423 1991 Fox Ave. Fairbanks, AK **907.258.1900** 1920 W Dimond Blvd. Anchorage, AK

QUALITY • INNOVATION • SAFETY

BUILDERS CHOICE

ANCHORAGE • WASILLA • SOLDOTNA

We Offer Full Material Packages!

Lumber • Trusses
Hardware • Windows • Doors

PACIFIC
WOODTECH

ROSBORO X-BEAM
NEXT-GEN GLULAM

JELD WEN

907.375.1280 • BUILDERSCHOICE.US.COM

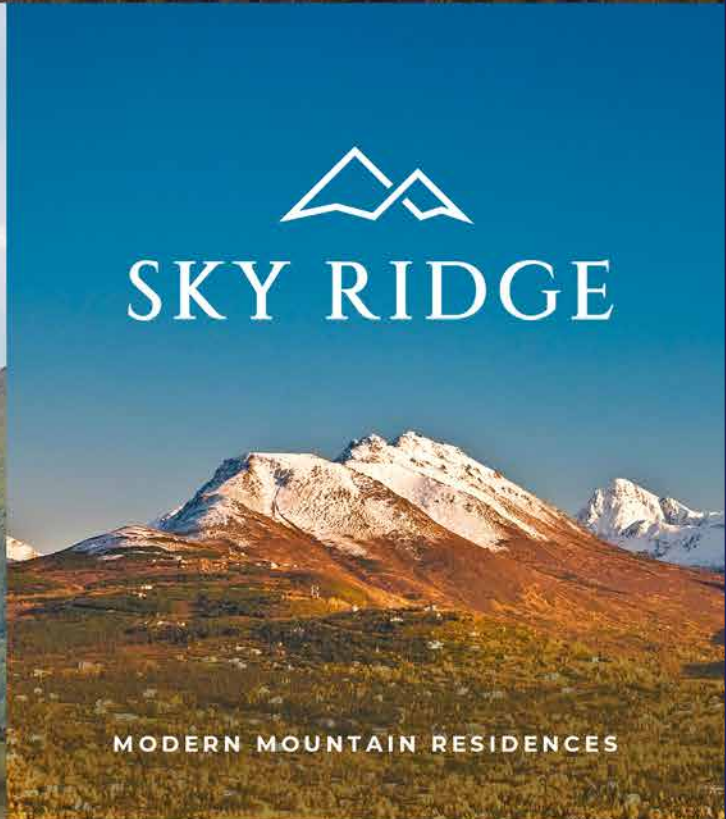


EAGLE BLUFF ESTATES

LARGE, STUNNING LOTS IN BEAUTIFUL EAGLE RIVER



CONTEMPORARY ALPINE LIVING



SKY RIDGE

MODERN MOUNTAIN RESIDENCES



907.302.6262

\$517,000

SPINELL HOMES

16



CURRY RIDGE

13120 CHASE CIRCLE

1,671 sq. ft.

3 bedroom

3 bath

2 garage

Check out this new subdivision within Powder Ridge. This floor plan features vaulted ceilings, making the 1,600 square foot home feel even bigger. The open concept living plan has a wall of windows that maximizes the view. The convenient location provides peace and privacy yet is minutes from JBER, shopping and downtown Anchorage. This family-friendly community is located in a great school district.

DIRECTIONS: Glenn Hwy to N Eagle River Exit, North on Eklutna Park Dr, left on Vasili Dr, left on Stephan Valley Dr, left on Curry Ridge Cir, right on Chase Cir

Under Construction

Builder



WWW.SPINELLHOMES.COM

Agent



kw ALASKA GROUP
KELLERWILLIAMS. REALTY

QUESTA LOCKE
(907) 350--2322
questa@alaskahomequest.com

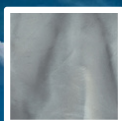
Customized epoxy floors beautify and meet the unique needs of your home.



Flake systems provide texture and durability for garages, shops, and laundry rooms.

GH Alaska LLC is Alaska's epoxy flooring specialist, conveniently located in Wasilla. Contact us today for an installation quote.

10% OFF Installation*



Metallic systems provide seamless beauty and easy cleaning for recreational and living rooms.

*For discount, mention this ad when requesting a quote.



(907) 414-4941
AlaskaResin.com/GH-Alaska



DISCOVER THE FIRST NATIONAL DIFFERENCE

Your First National loan officer, backed by a century of experience, has the local knowledge and expertise to help you get the right loan for the job.

- Construction Loans Home Loan Center
907-777-HOME (4663)
- Home Loans
- Business Loans Construction Loans
907-777-3941
- Real Estate Loans



Shaping Tomorrow Since 1922

HVAC Services

Local heating and cooling experts
100% backed by The Home Depot

Request an Appointment

- Installation >
- Repair >
- Maintenance >

[Or learn more about our services](#)



Prioritizing Your Safety

Our providers follow CDC guidelines for safety and social distancing, including frequent hand washing and a touchless approval process.



Supporting Local Pros

Working with Home Depot helps support local businesses. We partner with top pros from your community so you enjoy exceptional local service — 100% backed by The Home Depot.



Quality Work Guaranteed

We back all our heating and cooling installations with a one-year warranty, and our repairs and tune-up services with a 90-day guarantee.



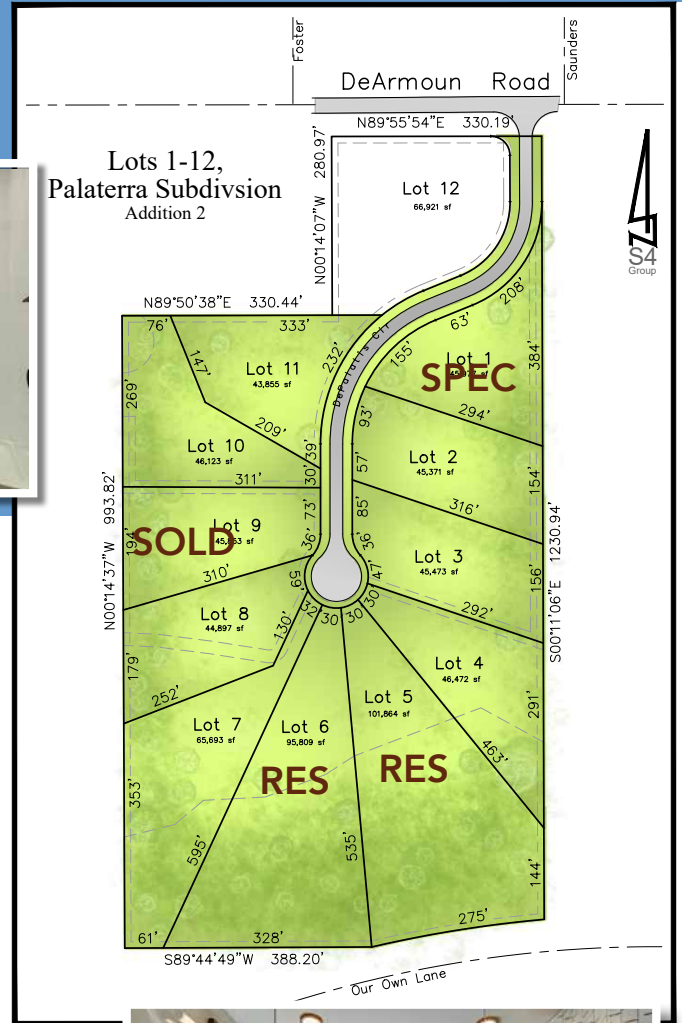
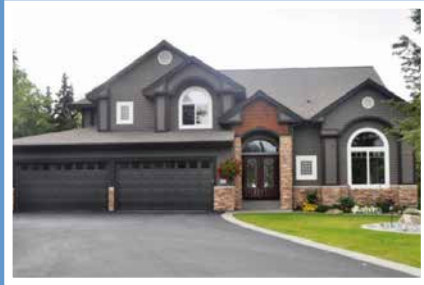
Affordable Financing

We offer several financing options to meet your needs and budget, from 12 months no interest to 120 months with low monthly payments.



South Anchorage #8940
1715 Abbott Rd.
Anchorage, AK 99507
907-644-5646

Introducing Palaterra Subdivision!



Colony Builders is developing an 11-lot subdivision in South Anchorage. Build your dream home on this gorgeous hillside cul-de-sac! These acre plus, treed lots sit on great soil. All homes will be built by award winning Colony Builders. Lots starting at \$175,000.

- 44,000 - 101,000 sq. ft. lots
- Room for all your toys
- Paved roads



Tami Taylor
Your new home expert
Call or text
907-244-3504



Colonybuildersak.com
907-345-0371



BUILT BY OUR FAMILY FOR YOUR FAMILY

Giving families the keys to their new home since 1987. We look forward to building your family the perfect place for life's moments.



We Make It Easy To Join Our Family...



Stephanie Gamble
(907) 354-0277
Keller Williams Alaska Group



Questa Locke
(907) 350-2322
Keller Williams Alaska Group



Kevin Sigafoos
(907) 244-3212
Keller Williams Alaska Group

**Call a new
construction
specialist**

1900 W. Northern Lights Blvd. Suite 200, Anchorage, AK 99517

Phone: (907) 344-5678 | spinellhomes.com

Spinell Homes, Inc., AK Contractor #220310, Res. #92 & 1572